

Readme ver 1.0



Nocturnal Illusion

(C) 1997 RCY Bros./Excellents Japan.

CONTENTS

- I - Legal Warning
- II - Introduction
- III - Running the Game
- IV - Warranty
- V - Character Introduction
- VI - How to contact Us

I. LEGAL WARNING

The software described in this file is made available under a license, and use of the software implies acceptance of the terms herein. This software is for use with one (1) personal computer user. This software product may not be shared or used concurrently on a different computer with a network.

This game and the graphics images found within **Nocturnal Illusion** are copyright (C) 1998 RCY Bros./Excellents Japan, all rights reserved. Unauthorized duplication of this software will result in serious civil and legal penalties. Unauthorized distribution of graphic images from this product is punishable by law. Any trademarks belong to their respective trademark owners.

This game is intended for adults only, ages 18 and over. Please obey all local laws. **RCY America** and the reseller are not responsible for the sales to individuals.

IMPORTANT: This game contains graphic violence and sexual situations. It is absolutely not for viewers under 18 years of age. Viewer discretion is advised. All characters depicted in sexual conduct or in the nude are aged 18 years or older. No actual or identifiable minor was used in the creation of any character depicted herein.

NOTE: This product may not be re-imported to Japan. It is expressly intended for use outside of Japan, and to re-import it is unlawful by Japanese law. Criminal penalties in Japan may apply for possession of sexually uncensored material such as this game.

II. INTRODUCTION

Thank you for buying our premier offering!

RCY America is in business to provide various Anime software titles to you (not only "hentai" or adult anime games). We hope that you will enjoy our first title, **Nocturnal Illusion**. We feel the storyline is excellent and the graphics top-notch, so you should find many hours of enjoyment. We hope that you will continue to support our efforts to bring great anime game software to the world.

We will release more Anime game titles in the near future, so please watch for our titles. If you can access Internet, please visit our site <http://www.rcyamerica.com>. Again, thanks for your support!

III. RUNNING THE GAME

System Requirements:

Windows 95-based PC
486 or better processor (Pentium recommended)
16 MB of RAM (or more)
CD-ROM drive
SoundBlaster PRO or
100% Compatible sound card
(MIDI interface recommended)

GAME INSTALLATION

Nocturnal Illusion is not installed onto your hard drive, and never occupies space. It is run directly off of the CD-ROM. Saved games will be stored in a directory on your computer's hard disk. The location of the save game files will be c:\NOCTURN (but you can specify the save game directory in the setup application)

To run the game, insert the CD ROM into the computer's CD ROM drive. The game will autorun the installation application, but if you have autorun disabled, click the file item SETUP.EXE.

GAME PLAY



In **Nocturnal Illusion**, the story unfolds by selecting various commands from the command area. You can select between different on-screen commands by using the mouse, the arrow keys, or the numeric keypad. Pressing the left mouse button, the space bar, or the return key (the "execute" keys) selects the highlighted option. Pressing the right mouse button, the escape key, or the zero key on the keypad (the "cancel" buttons) cancels the current action.

For example:

During the game, move the cursor to the choice you want and press the command key. When further choices

appear after you have made a selection, select from the new set of choices in the same manner. If you press the cancel key you will return to the previous set of choices. When you press the cancel key while the main choices are on the screen, the system menu will be called onto the screen.

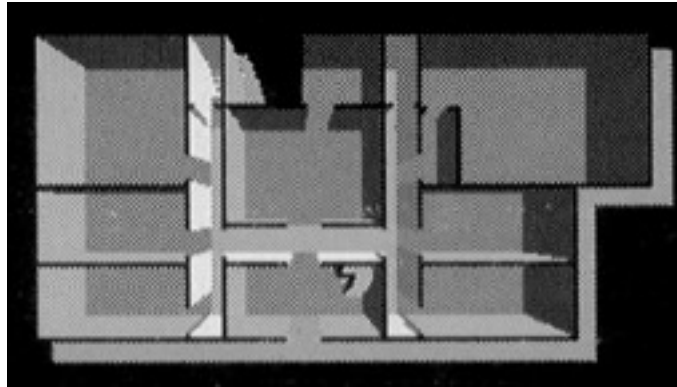
When full-sized graphics are displayed, the message window can be removed by pressing the <Cancel> key.

Note: You can move through the game at maximum speed by holding the control key. Be careful, however, as you will not be able to read the text flowing by.

Note: It is normal at certain times for the graphic to disappear, leaving a black screen in the game area. This is part of the game, and does not indicate an error or problem with your computer.

MOVING IN THE MANSION

You can move around the mansion by selecting the "move" command. The layout is something like this:



If you choose Move from the set of choices, a map like the one on the following will appear.



To move, click on the room that you wish to go to, and you'll be able to go there.

The rooms in the Mansion are as follows:

First Floor

The first floor of the mansion contains a main hallway, a kitchen, bathing area, and so on. It is connected to the second floor by a stairway.

Second Floor

In the center of this floor is a large study. The guestrooms that house the residents of the mansion are also on this floor. Your room is here.

The Garden

The lush garden of the mansion contains a storehouse and a well. But, for some unknown reason, it is impossible to go outside of the Mansion's land -- or is it?



System Menu

Pressing one of the cancel keys with nothing else on-screen will bring you to the system menu. This allows you do access the following options:

Save

Save your game in one of seven different locations.

Load

Resume a saved game.

Message speed

Changes the speed at which messages appear on the screen. The CAPS LOCK key causes messages to be delivered at maximum speed.

Exit Game

The choices "Quit" and "Return to Top Menu" appear. Push the cancel key if you wish to continue playing.

ADVICE ON PLAYING

You may feel you're in "dead end" situation in the game. If you feel so, please try to choose **all** commands shown in command area at least twice (or more) to be sure that you've seen all the text for that part of the game. Commands such as "think" or "talk" often display several pages of text. If you've "missed" some of the game text, you can't always go on to the next part of the game.

You can save the game at any point you see the command menu. Saving often is of course recommended, to avoid having to double back if you make a mistake as the game unfolds. You might want to save after Arisa's scene ends, too.

Nocturnal Illusion is a fully interactive game. Events that happen at one part of the game affect the events later in the game. For this reason, it's recommend that you keep notes on where you've saved the game.

IF YOU HAVE PROBLEMS:

We have tested this game thoroughly and verified that it works without problems on American PCs with Windows 95 and all major hardware products. Still, there are many vendors of software and hardware, so it is conceivable that problems might occur. If you have a problem with this product, please check all connections and verify that your operating system software is correctly installed.

If you're still experiencing software problems, please send us a detailed description of the problem, including what OS version you are using, what brand of computer you have, your CPU and memory configuration, your video and sound card makers, and anything else that can help us solve the problem for you.

IV : WARRANTY

RCY America warrants to the purchaser, for a period of ninety (90) days from the time of purchase, that this computer software program will perform as described in this readme file and the printed instructions.

Limitations

EXCEPT AS STATED ABOVE, **RCY AMERICA** MAKES NO WARRANTY, EXPRESS OR IMPLIED, CONCERNING THIS SOFTWARE PRODUCT. ANY IMPLIED WARRANTIES, INCLUDING WARRANTIES OF MERCHANTABILITY, ARE LIMITED TO THE NINETY (90) DAY PERIOD AS STATED ABOVE. **RCY AMERICA** SHALL NOT BE LIABLE FOR ANY SPECIAL, INCIDENTAL, CONSEQUENTIAL, OR OTHER DAMAGES RESULTING FROM USE OR POSSESSION OF THIS PRODUCT.

Some states do not allow limitations on implied warranties, and/or exclusions of liability, so the above limitations or exclusion may not apply to you.

You are entitled to use this product for your own private entertainment. You may not rent or lease the software to others, nor reproduce the software without prior written permission from **RCY America**. You may not use this software on a network or on more than one computer at the same time.

To make a warranty claim under this limited warranty, please contact RCY for instructions.

THIS WARRANTY ONLY APPLIES TO USA & CANADA SYSTEMS. **RCY AMERICA** IS NOT RESPONSIBLE FOR ANY INCOMPATIBILITIES WITH PC SYSTEMS IN OTHER COUNTRIES. IT IS SOLD "AS IS" AND IT IS UP TO THE USER TO DETERMINE COMPATIBILITY WITH THEIR COMPUTER.

V: CHARACTER INTRODUCTION

Shinichi Kashiwagi Age 22

The leading role in this game, this is the main character, you. A junior in the Law Department of Toshima University, Shinichi is a fairly handsome young man with a good personality, who is rather popular among women -- although he doesn't have a steady girlfriend. Taking advantage of the long summer break, he decides to spend some time in rural Japan by himself to reflect on his life. He is caught in a storm, however, and barely survives. This is going to prove a turning point in his life...



The Mistress of the Mansion Age 25

The caretaker of the Mansion -- or so she says. She tells you that things in the past happened so long ago that she can't remember them. A woman of many riddles, she looks at the world through grief-stricken eyes. Where is the truth in her words?



Yukina Age 20

A sad woman with an attempted suicide in her past, she is constantly fearful of someone...or something. An uneasy and timid person, she is aloof and difficult to approach. Will the day come when she smiles again?



Maya Age 24

She is a career woman who works in the publishing industry. She is highly competitive and hates being told she can't do something because she's a woman. She has no interest in love or marriage and does not hesitate to say that she detests men. But why?



Misao Age 19

Curiosity compelled her to enter the Mansion many years ago -- and she's been trapped here ever since. A tomboy, she's often very silly. She is active and rebellious against authority.



Yura Age 19

The woman in the storehouse. She is a traditional Japanese, brought up in a protective family, so she's quite ignorant of the outside world. She is guarded by an ancient demon, who never leaves her side. Who is this woman of many mysteries?



Sari Age 19

A lonely spirit, she can be found wandering in the garden alone at night. Is she waiting for her lover to return, as she says?



Miwako Age 20

She is the maid who takes care of the Mansion and all who live in it. To a stranger her task seems like a daunting one, but she just smiles and says, "It's nothing, really." She secretly prides herself on her cooking prowess.



Kunio Kusayama Age 26

He's a programmer for a large company in Tokyo. One night, while drinking in Shinjuku, he got wildly drunk, and when he awoke, he was here inside the Mansion. He loves alcohol more than anything.



Arisa Age 19

She is a cute woman who is fond of animals. Her grandmother on her mother's side was British, which is where she apparently got her beautiful head of gold from. She is quite fond of her hair, and is happy when others compliment her on it.



Red Hood Age 19

She appears in the Mansion one day, with a large, grey wolf. A mysterious woman of many secrets, all will be told in time.

VI: HOW TO CONTACT US

The best way to contact RCY America is through email. Our email address is

info@rcyamerica.com (for information on our products)

sales@rcyamerica.com (for information on purchasing our products)

support@rcyamerica.com (for questions about problems with the game)The second best way to contact us is by fax. Our fax number is

FAX (212) 573-6627

Faxes will be re-routed to our office in Tokyo, where we will reply as soon as possible. Please be sure to include a fax number so that we can respond to your questions.RCY America's mailing address is:

RCY America
Helmsley Building, Suite 816
230 Park Avenue
New York, NY 10169

Thanks!